

# EMP-168

Chemistry Analyzer



**EMP**<sup>®</sup>  
Emperor Medical

## Technical Specifications

Optics	340, 405, 505, 546, 578, 620, 670nm, one more optional filter
Light source	Halogen 6V/10W
Resolution	0.001Abs
Photometric range	0.000-3.000Abs
Stability of absorbency	Changes<0.005 Abs per hour
Repeatability	CV≤0.5%
Carry over	≤1%
Linearity	R≥0.999
Flow cell	32ul with peltier temperature control (25°C, 30°C, 37°C)
Memory	200 test programs and over 100,000 test results
Display	7" TFT LCD
Printer	Built-in thermal printer
Data communication	RS-232, SD card, USB port, Ethernet
Power supply	AC 100-240V, 50/60Hz
Dimension(mm)	420(L)x310(W)x152(H)
Weight	7 kg

## Options



Optional filter



Touch screen



External printer



Bar-code reader



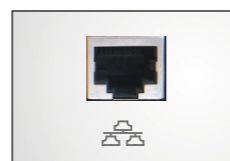
Flash disk



SD card



Keyboard



Ethernet port



**EMP-168**  
Chemistry Analyzer

**EMP**<sup>®</sup>

**Shenzhen Emperor Electronic Technology Co.,Ltd.**

Add:2/F, Building7, Tian'an Nanyou Industrial Area, Nanshan District, Shenzhen 518054, China

Tel: +86-755-26073285 26415597

Fax: +86-755-26073886 26419886

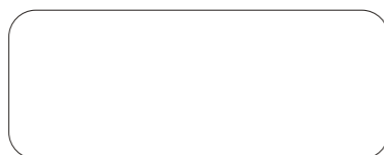
E-mail: business@china-emperor.com

Http://www.china-emperor.com

We reserve the right to make modifications without prior notification.



**DISTRIBUTOR**



EN.168.201012



*Completely New Experience in Operation*

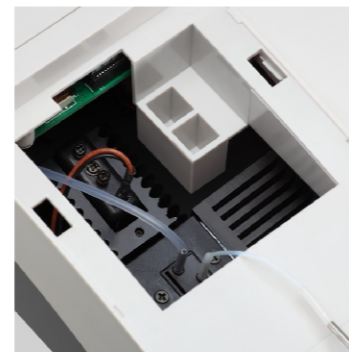
# EMP-168

Chemistry Analyzer

EMP-168, a brilliant chemistry analyzer with Windows operation system, speed processing and intelligent software, gives user completely new operation experience.

## Features

- Friendly interface
- Adjustable touch LCD screen
- Test results simultaneously displayed in screen
- Low carry over with air purge between samples
- Durable to work under high temperature up to 40°C

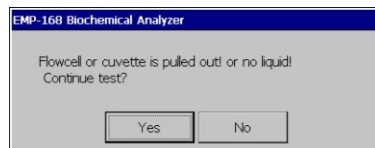


## Measuring System

- End point, Kinetics, Two-point and Absorbance
- Immunity nephelometry measure method
- Multi-standards (Linear, Non-linear)
- Memory for reagent blank and sample Blank

## Cuvette/Flow Cell

- 32ul quartz flow cell
- Built-in bottom position localizer
- Two-holder for cuvette/flow cell
- Peltier temperature control



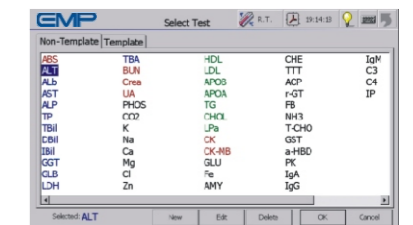
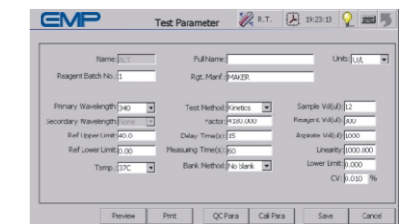
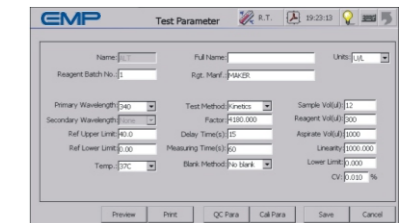
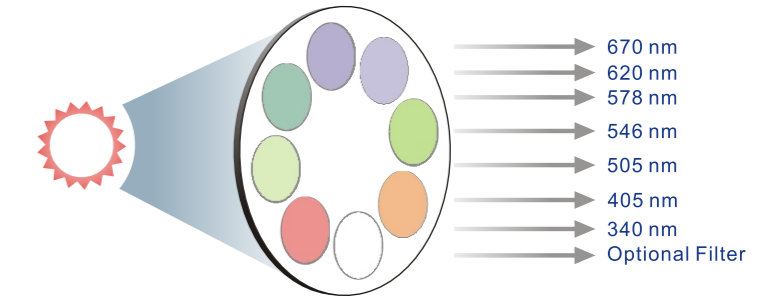
# EMP-168

Chemistry Analyzer



## Optical System

- Halogen-tungsten lamp
- Automatic filter-wheel with 8 positions
- 7 interference filters and 1 optional filter



## Powerful Software

- Open reagent
- Self-check and malfunction alarm
- Lamp automatic protection
- User-define parameter test available
- Real time absorbance curve and temperature display